



Liquefied Petroleum Gas

Rail Tank-Car Valves – The Complete Solution

MIDLAND 
PART OF OPW A **DOVER** COMPANY

www.midlandmfg.com



The Perfect Package

Midland's LPG valve and accessory package is the perfect solution for your fleet. Each valve and accessory is guaranteed to deliver the safest and most reliable performance for railcars transporting LPG.



B-612 Magnetic Gauging Device

Serving as a standard of the industry, more than 40,000 of Midland's precisely engineered gauging devices are currently in use. Midland gauges ensure the complete and accurate loading and unloading of liquids.

FLOAT DIAMETER	BODY MOUNTING
7 1/2"	(4) 3/4" holes Ø 3 1/4" B.C.
	(4) 7/8" holes Ø 4 1/8" B.C.
Options Available for Flange Mounting, Thread Type, and Scale Requirements	



A-721-B Angle Valve

The Industry Workhorse

Midland's 2" angle valve features soft seating for a more consistent and reliable seal. Plus, the stem packing adjusts to changing conditions in which the valve operates, allowing for longer service intervals.

MAX OP PRESSURE	MAX OP TEMP	FLOW COEFFICIENT
500 psig	350° F	83.5 @ wide open position



Pressure Relief Valves

The most complete line in the industry, with excellent flow characteristics to meet LPG tank-car requirements. Low profile, interior tank-car designs.

FLOW RATE		
SERIES	PSI	SCFM-AIR
A-1000	150-450	1109-4705
A-3400	150-330	20500-31771
A-35000	220-330	22685-35107
A-37000	220-330	34713-49912



Check Valves

Engineered to provide reliable, high flow rates in conjunction with high-flow disturbance sensitivity to help operators achieve safer operation and faster unloading times.

MODEL	CONNECTION	TYPE
A-115	3/4"	Liquid
A-119 Series	1 1/4"	Liquid
A-144	2"	Vapor
A-144-P	2"	Vapor w/ Surge Shield
A-164	3"	Liquid
A-164-P	3"	Vapor w/ Surge Shield
Options Available		

Full Line of Accessories



Needle Valves

Midland needle valves keep operators safe by allowing sampling without opening larger transfer valves.

MODEL	CONNECTION	MATERIAL
A-254-SS	1/4" NPT	303 SS Stem & Body
A-256-SS	1/4", 3/4" NPT	303 SS Stem & Body
A-256-MO	1/4", 3/4" NPT	316 SS Stem & Body
Options Available		



Lifter Assisters

Provides lifting assistance to operators during raising and lowering of dome cover.

MODEL	ASSIST AT HANDLE (36" DIA COVER)
Single Spring	Up to 44 lbs.
Double Spring	Up to 88 lbs.



Thermowells

Safe, non-contact access for temperature measurement.

MODEL	CONNECTION	MATERIAL
B-290 Series	3/4" NPT	303 SS, 316 SS or Carbon Steel

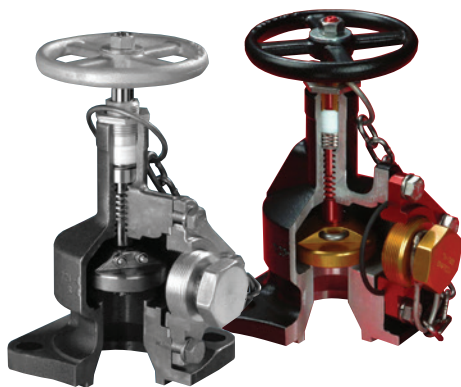


Manway Covers

Made from AAR-approved materials to offer long-term durability and corrosion resistance. Designed to meet unique and specific application requirements.

MANWAY COVER	MATERIAL
18", 20", 22" & 24" Options	303 SS, 316 SS, or Carbon Steel
Configured to Specifications	

LPG Railcar Valve Solutions



Angle Valves for LPG Service

Midland is committed to producing angle valves that provide safety for pressure tank cars. Longevity, high performance and ease of maintenance is standard for tank cars equipped with Midland angle valves. The unique seat design permits self-draining without concern for trapped product or accidental release. Soft, self-centering valve seats provide long life and positive shutoff along with lower operating torques.



Needle Valves

Fabricated in Midland's Skokie, IL, manufacturing facility, Midland needle valves offer the same quality construction, durability and reliability as our complete line of valves and accessories.



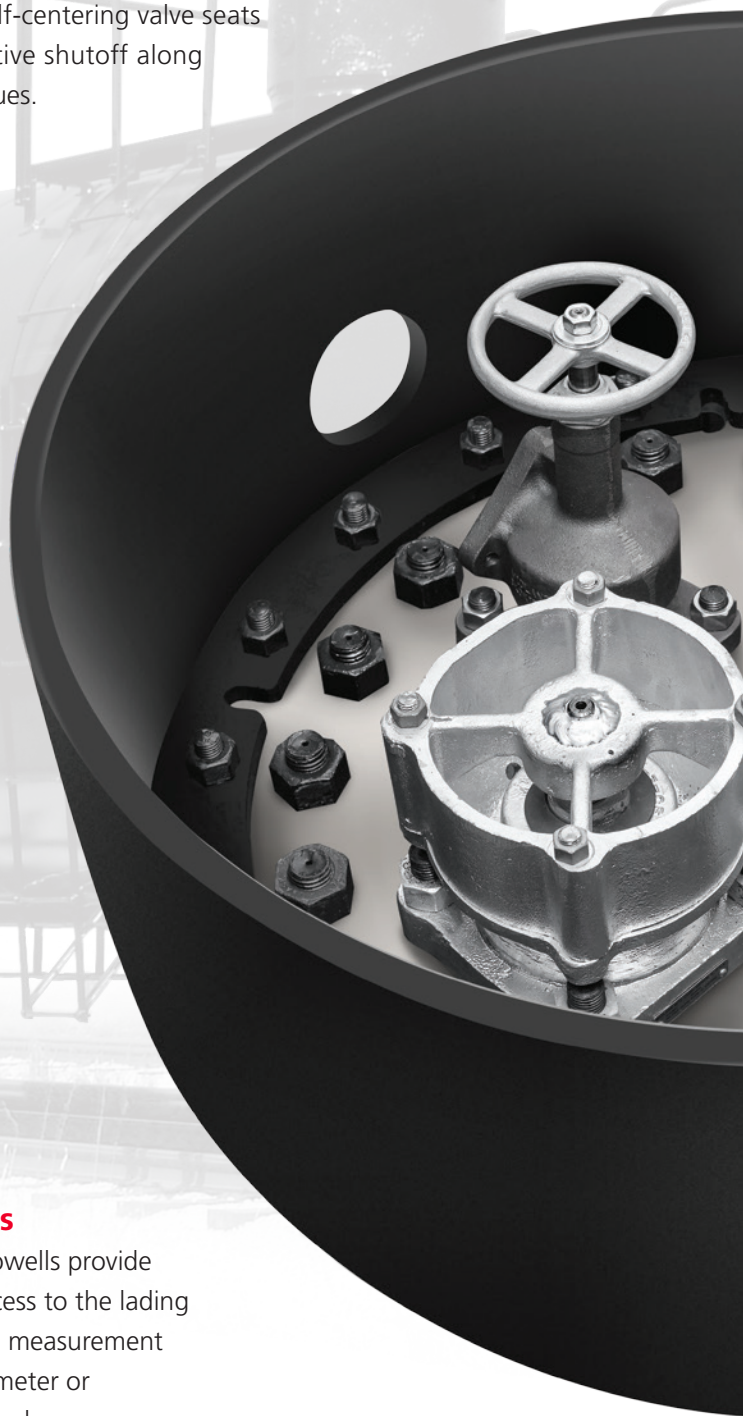
Magnetic Gauging Devices

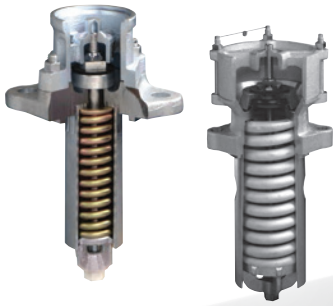
Provide accurate level monitoring to ensure the complete loading of railcars, while the small mounting flange size reduces space requirements, making it easier to locate other equipment on the manway plate.



Thermowells

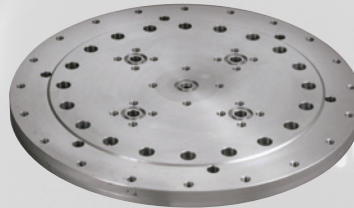
Midland thermowells provide non-contact access to the lading for temperature measurement using a thermometer or thermocouple probe.





Pressure Relief Valves

Performance reliability and flexibility. Interior valve body designs for every DOT pressure rating from 150 psig to 330 psig with flow rates up to 49,912 scfm. Seals are simple to maintain and easy to replace – maximizing the in service time of every tank car.



Manway Covers

For use on any pressure car. Standard and custom-fitting arrangements are readily available.



Check Valves

Superior Midland product standards mean non-galling assemblies that keep valves sliding easily without binding.



Lifter Assisters

Engineered for versatility, durability and ease of use, Midland lifter assisters feature a unique low-profile design that doesn't interfere with personnel on top of the car, won't damage loading/unloading facilities and won't catch operator clothing.

Midland is the Complete Solution

Midland understands your fleet of LPG railcars is not all the same condition or even age. That is why Midland Manufacturing offers a comprehensive **Valve Remanufacturing & Repair Program**. From remanufacturing and repairing Midland-branded valves to repairing non-Midland valves, there is a cost-effective solution for your fleet.

Midland does more than just offer a "repair program." Midland continuously collects general industry and specific application data of railcar valves. This information allows insight for future product developments and is part of Midland's custom consultative approach for optimizing valve service intervals - *no matter the commodity* you transport.

Working as a resource for your company, Midland helps you achieve more uptime, better utilization of personnel, increase your bottom line, safety and peace of mind.



Midland Manufacturing's Valve Remanufacturing & Repair Program Helps Clients Reach New Heights

Case Study

Location: New Jersey, USA

Challenge: Develop a cost-effective and measurable maintenance program for railcars with pressure relief valves.

Solutions: Midland's Valve Remanufacturing & Repair Program provided performance data on used valves to help establish a 5-year valve maintenance and requalification cycle that is ideal for the client and ensures safe handling of the commodity.



For the full case study, visit <http://www.midlandmfg.com/remufacturing>

By combining Midland's valve expertise with the best data, you have an opportunity to capitalize on incredible savings.

Call Midland Manufacturing today to start increasing your bottom line: 1 (847) 677-0333



OPW Global Operations

- 1 OPW Corporate Headquarters
- 2 OPW Fuel Management Systems
- 3 OPW Retail Fueling
- 4 OPW Engineered Systems
- 5 Midland Manufacturing
- 6 Civacon
- 7 PDQ Manufacturing, Inc.
- 8 OPW Mexico
- 9 OPW Latin America
- 10 Poland/Petro Vend of Poland, Inc.
- 11 OPW EMEA Headquarters
- 12 OPW EMEA Czech Republic
- 13 OPW FTG Europe
- 14 OPW India
- 15 OPW Asia Pacific
- 16 OPW Russia

Midland Manufacturing – Chicago Headquarters

7733 Gross Point Road
Skokie, Illinois 60077, USA

Midland Manufacturing – Texas Facility

11951 North Spectrum Blvd
Houston, TX 77047, USA

Phone: +1 (847) 677-0333 ◆ Fax: +1 (847) 677-0138 ◆ www.midlandmfg.com

