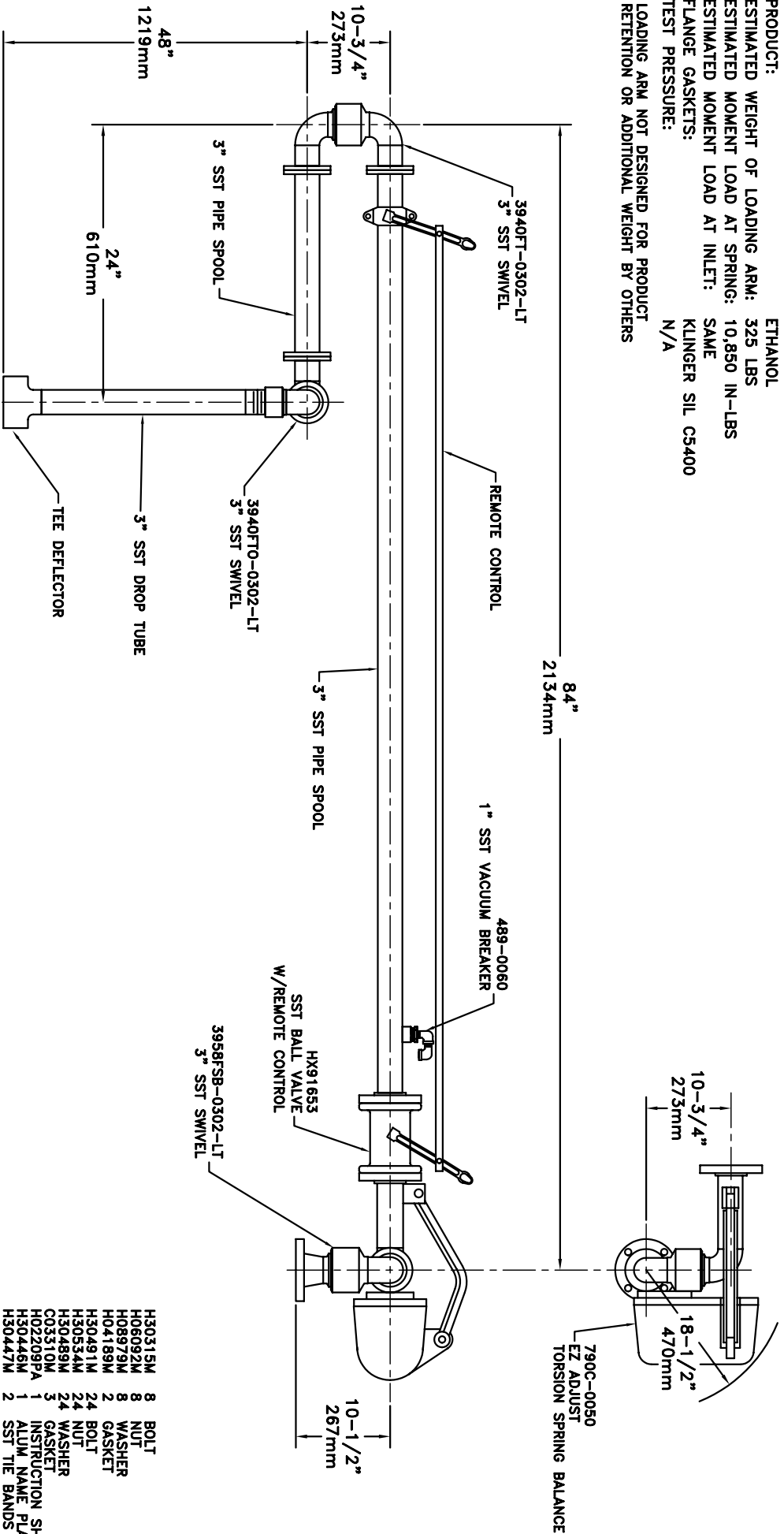


**MATERIALS OF CONSTRUCTION: 316L STAINLESS STEEL**  
**SWIVEL JOINT SEALS: VITON GFLT**

**PRODUCT: ETHANOL**  
**ESTIMATED WEIGHT OF LOADING ARM: 325 LBS**  
**ESTIMATED MOMENT LOAD AT SPRING: 10,850 IN-LBS**  
**ESTIMATED MOMENT LOAD AT INLET: SAME**  
**FLANGE GASKETS: KLINGER SIL CS400**  
**TEST PRESSURE: N/A**  
**LOADING ARM NOT DESIGNED FOR PRODUCT RETENTION OR ADDITIONAL WEIGHT BY OTHERS**



H30315M	8	BOLT
H06092M	8	NUT
H08979M	8	WASHER
H04189M	2	GASKET
H30491M	24	BOLT
H30534M	24	NUT
H30489M	24	WASHER
C03310M	3	GASKET
H02209FA	1	INSTRUCTION SHEET
H30446M	1	ALUM. NAME PLATE
H30447M	2	SST TIE BANDS

OPERATION	A	B	C	D
WELD				
MACHINE				
ASSY & TEST				
ASSY ONLY				
TEST ONLY				
PAINT				

1. HIGH LIGHT RECD. OPERATIONS PER ASSY.  
 2. RECD. CLDR. NO. WHEN COMPLETE.

**C32RF-G811** 3"

**OPW** **Engineered Systems**  
 www.opw-es.com

DRAWN BY: BUB  
 CHECKED BY: BUB  
 QUOTE NO. 14035

SCALE: NONE  
 DATE: 9/12/08  
 DRAWING NO. SK14035B