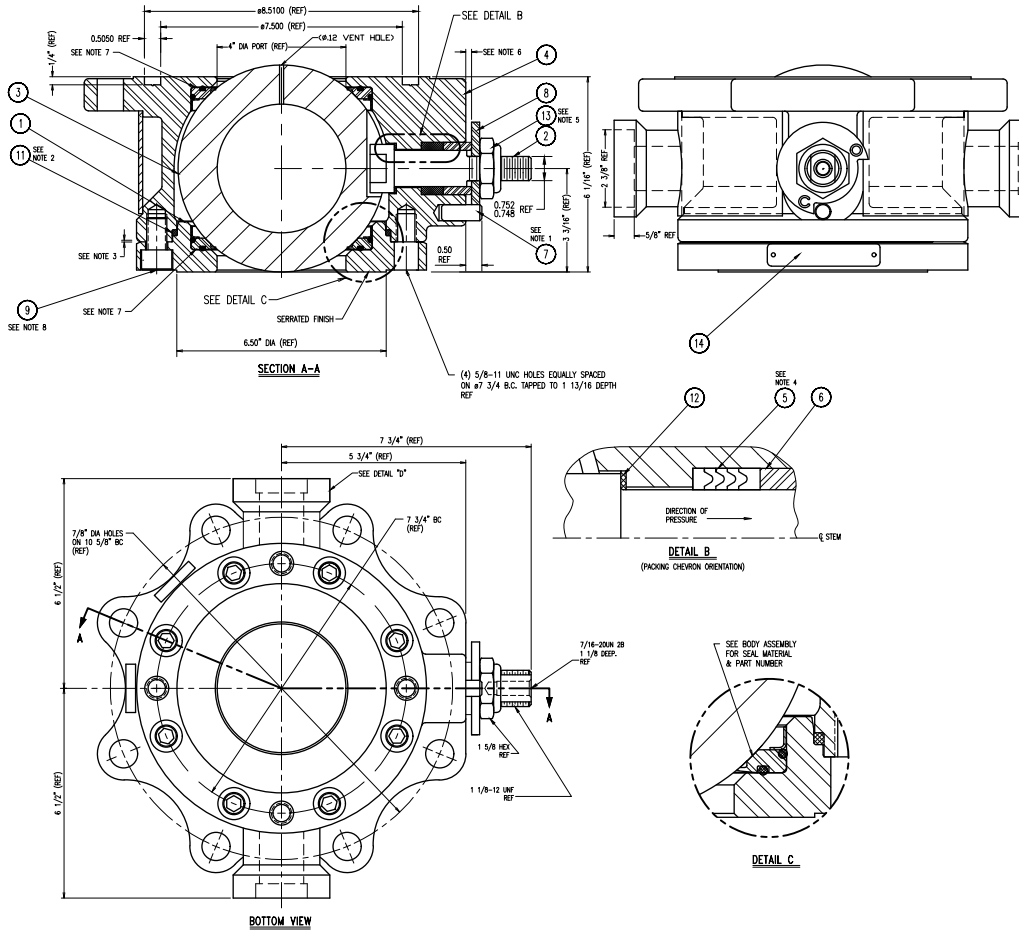


Model A-522-C2-CS-SJ-SU Series

4" Ball Valve w/ Steam Jacket for Sulphur Applications



Item	Qty	Part Name	A-522-C2-CS-SJ-SU		A-522-C2-MO-SJ-SU	
			Part Number	Material	Part Number	Material
1	1	Cap Assembly	See Table	See Table	See Table	See Table
2	1	Stem	520-2-SS	Stainless	520-2-SS	Stainless
3	1	Ball	520-30-MO	Stainless	520-30-MO	Stainless
4	1	Body Assembly	See Table	See Table	See Table	See Table
5	1	Packing	520-5-01-TF	Teflon	520-5-01-TF	Teflon
6	1	Spacer	520-6-SS	Stainless	520-6-SS	Stainless
7	1	Pin	520-7-CS	Steel	520-7-CS	Steel
8	1	Stop Plate	520-8-CS	Steel Plated	520-8-CS	Steel Plated
9	8	Capscrew, Hex-Soc, 5/8"-11UNC-2A x 1" LG	520-9-CS	Steel	520-9-CS	Steel
10						
11	1	Seal, Valve Body	520-11-01-TF	Teflon	520-11-01-TF	Teflon
12	1	Washer, Thrust	520-12-01-TF	Teflon	520-12-01-TF	Teflon
13	1	Lockout, Hex, Thin, 1 1/8"-12UNF, Nylon Insert	520-13-CS	Steel Plated	520-13-CS	Steel Plated
14	1	Nameplate	522-14-88-SS	Stainless	522-14-86-SS	Stainless
15	1	Handle (*)	520-15-CS	Steel	520-15-CS	Steel
16	1	Washer, Handle (*)	520-16-CS	Steel	520-16-CS	Steel
17	1	Bolt, Handle (*)	520-17-CS	Steel	520-17-CS	Steel

(*) Items 15, 16, 17 not shown are optional

NOTES:

1. Stop Pin 7 Installation into Body 4 is an Interference Fit. The Stop Pin Must Extend 0.50" after Being Pressed into Body.
2. Body Seal 11 Must be Press-Fit into Bbody 4 Before Cap 1 is Installed.
3. After Assembly the Body 4 and Cap 1 Must Make Intimate Contact. No Gap Is Allowed.
4. Stem Packing 5 to be Installed with Chevrons Oriented per Detail "B".
5. Torque Packing Nut to 150-Ft-Lbs Initially.
6. After Assembly of Valve There Must be a 1/8" Min. and 1/4" Max. Gap Between the Body 4 and the Valve Stem Stop 8.
7. Apply Small Amount of Dow Corning 111 Lubricant on 45° Taper of Ball Seals Prior to Assembly.
8. Torque Socket Head Cap Screws to 130 Lb-Ft, If the Requirement of Note 3 is Not Met, Increase Torque in 40 Lb-Ft Increments Until the Requirement Is Met. Do Not Exceed 250 Lb-Ft.
9. Valve Is Assembled For Counter Clockwise Shaft Rotation to Close.
10. For Clockwise Shaft Rotation to Close, Close Valve, Remove Item #13, Remove, Turn Over and Reinstall Item #B, and Reinstall and Tighten Item #13 Per Note #5.

Valve Model Number	Cap Assembly		Body Assembly		
	Part Number	Material	Part Number	Material	Seal Material
A-522-C2-CS-SJ-SU-ST	522-100-CSST	Carbon Steel	522-430-CSST	Carbon Steel	50% 316SS Filled PTFE & VA
A-522-C2-CS-SJ-SU-TF	522-100-CSTF	Carbon Steel	522-430-CSTF	Carbon Steel	PTFE & VA
A-522-C2-MO-SJ-SU-ST	522-100-MOST	Stainless Steel	522-430-MOST	Stainless Steel	50% 316SS Filled PTFE & VA
A-522-C2-MO-SJ-SU-TF	522-100-MOTF	Stainless Steel	522-430-MOTF	Stainless Steel	PTFE & VA