

# Model A-1402-A Series

## Pressure Relief Valve

Valve Model No.	Orifice Area (Sq In)	Flow Pressure (PSIA)	Flow Rate @10% > R.D. (CFM Air)	Through Put Efficiency (-)
A-14227-ML-A	1.35	262.2	4629	67
A-14377-ML-A	1.35	427.2	7299	67
A-14502-ML-A	1.35	546.2	8616	61

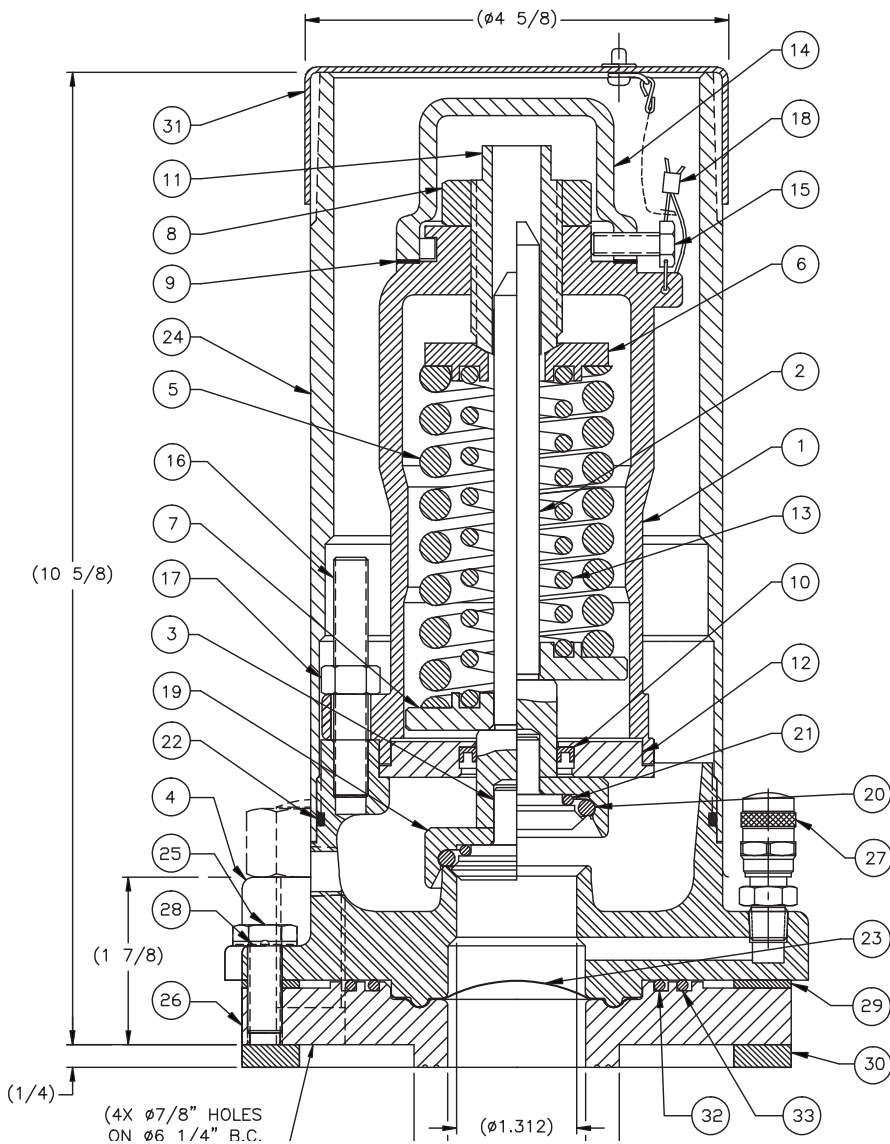
Valve Model No.	Rupture Disk Setting (PSIG)	Valve Pressure Setting (PSIG)	Vapor Tight Pressure (Minimum) (PSIG)	Outter Spring	Inner Spring	Nameplate	Rupture Disc	AAR Number
A-14227-ML-A	202 – 225	210	200	15-150-MO	14-13-SS	14-227-ML-A	14-23-TA-225	PRD092002
A-14377-ML-A	319 – 375	351	336	15-375-SS	14-13-SS	14-377-ML-A	14-23-TA-375	PRD092002
A-14502-ML-A	450 – 500	470	445	15-450-SS	14-13-SS	14-502-ML-A	14-23-TA-500	PRD092002

### Notes

- FOR STAINLESS STEEL FLUE, ADD SUFFIX -S TO MODEL NUMBER.
- 15-112-SS ADJUSTMENT SCREW IS USED ON A-14377-ML AND A-14502-ML.
- A-1402 SERIES VALVES CAN BE REBUILT TO A-1402-A SERIES VALVES.

# Model A-1402-A Series

## Pressure Relief Valve



Item	Qty	Part Name	Hastelloy C Trim	
			Material	Part No.
1	1	Top Guide	Stainless Steel	14-101-SS
2	1	Stem	Hastelloy C/Monel	14-2-XC
3	1	Plug	Hastelloy C	14-2-HC
4	1	Body	Hastelloy C	14-480-HC
5	1	Out Spring	Stainless Steel	See Table
6	1	Follower	Stainless Steel	14-6-SS
7	1	Guide	Stainless Steel	14-7-SS
8	1	Top Nut	Stainless Steel	15-8-SS
9	8	Top Gasket	Viton	15-9-VA
10	1	Shaft Seal	PTFE	17-10-TF
11	1	Adjusting Screw	Stainless Steel	15-11-SS (2)
12	1	Seal Retainer	Monel	14-12-ML
13	1	Inner Spring	Stainless Steel	See Table
14	1	Cap	Stainless Steel	14-14-SS
15	1	Seal Screw	Steel Plated	15-15-CS
16	4	Stud	Monel	14-16-ML
17	4	Nut	Monel	14-17-ML
18	1	Wire Seal	SS Wire, Lead Seal	22-72-PB
19	1	Retainer	Hastelloy C	14-19-HC
20	1	Seat "O" Ring	Viton	10-10-VL
21	1	Plug "O" Ring	Viton	10-11-VL
22	1	Flue "O" Ring	Viton	14-22-VA
23	1	Rupture Disc	Tantalum	See Table
24	1	Flue	Plastic(1)	14-24-PC
25	4	Rupture Disc Flange Bolts	Stainless	15-16-SS
26	1	Rupture Disc Flange	Monel	14-372-ML
27	1	Purge Valve	Monel	17-240-ML
28	1	Nameplate	Monel	See Table
29	1	Upper Filler	Viton	14-29-VA
30	1	Lower Filler	Viton	14-30-VA
31	1	Protective Cap/Chain	Polyethylene/SS	14-311-PE-SS
32	1	Flange O-Ring Inner	Viton	32-11-VL
33	1	Flange O-Ring Outer	Viton	14-331-VL

**NOTES:**

1. FOR STAINLESS STEEL FLUE, ADD SUFFIX -S TO MODEL NUMBER.
2. 15-112-SS ADJUSTMENT SCREW IS USED ON A-14377-ML AND A-14502-ML.
3. A-1402 SERIES VALVES CAN BE REBUILT TO A-1402-A SERIES VALVES.