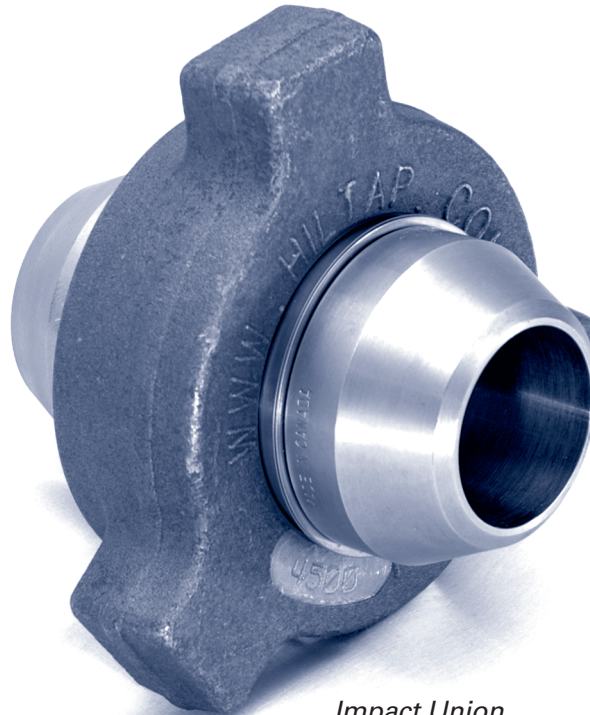


- ● ● ● ● ● ● ●
 - ● ● ● ● ● ● ●
 - ● ● ● ● ● ● ●
- HT-3IU Series**
 High Performance
 Quality Impact Unions



Impact Union

Description

The HT-3IU impact union does what conventional “hammer unions” do, but better: Our “connector” is designed for leak proof operation over a wide range of temperatures and pressures. The re-useable sealing components offer 2 metal to metal wedge seals as well as an additional “O” ring seal, targeting full compliance to the latest environmental laws.

Applications include

- Next to sensitive electronic equipment e.g. most flow meters
- Modular skid “tie-ins”
- High pressure gas/oil
- Meter/production flow production
- Gas distribution “tie-ins”
- High axial load stresses
- Sour gas
- Unconventionally high pressures
- High erosion/corrosion applications

Features

- Contains fugitive emissions
- Easier installation, skid fabrication and maintenance
- Interchangeable with each other
- Low profile
- Light weight
- Ultra low impact/torque to engage
- Repeatedly re usable metal-to metal seals
- Tertiary (3rd) “O” ring seal
- Available in, butt, threaded, hose barb, socket weld end configurations
- Designed and tested to ANSI B31.3
- Manufactured to ISO 9001-2000
- Designed and built to ABSA requirements, Alberta Boiler Safety Association (A.S.M.E. Registrar)
- Meets N.A.C.E corrosion specifications
- Full material trace ability
- Canadian CRN’s exist

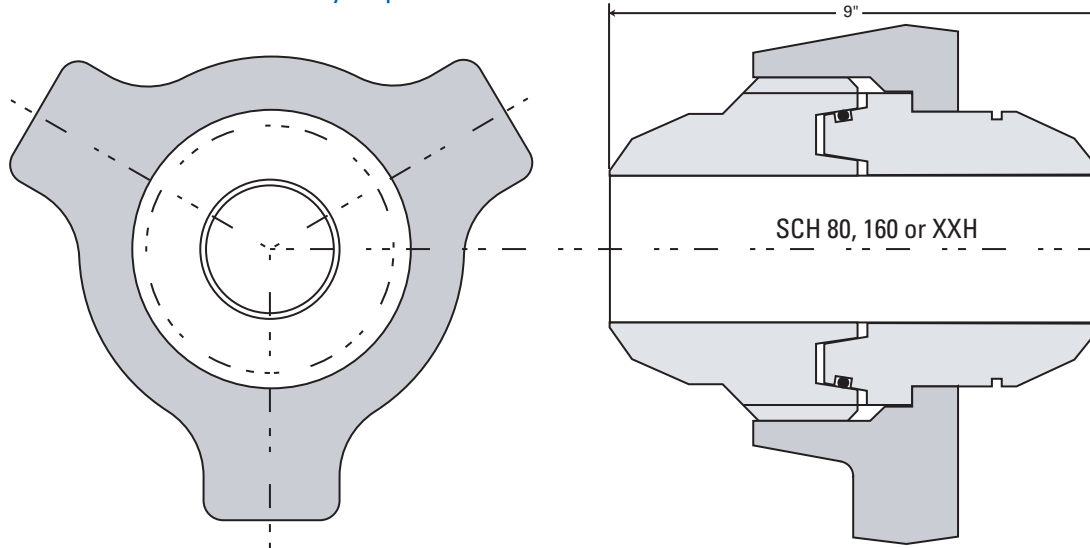


Engineered Systems
PART OF OPW FLUID TRANSFER GROUP
A DOVER COMPANY

- PIPE, TUBING, AND HOSE COUPLING SEALING SOLUTIONS
- PROCESS PIGGING
- PRODUCT RECOVERY TECHNOLOGIES



- ● ● ● ● ● ● ●
 - ● ● ● ● ● ● ●
 - ● ● ● ● ● ● ●
- HT-3IU Series**
High Performance
Quality Impact Unions



MODEL: HT-3IU

Specification Example: HT-3IU - 20 - 33
(2" IMPACT UNION Both Ends butt weld, Carbon Steel)

Pipe size (Nom) (Inch)	Working pressure PSI			Outside diameter (Inch)	Overall length (Inch)
	Socket	Thread	Butt		
1" (1.0)	Please consult Hiltap for specifications			1" (2.25)	5.0"
2" (2.0)				2" (3.4)	6.0"
3" (3.0)				3" (4.0)	7.2"
4" (4.0)				4" (5.2)	9.5"
6" (6.0)				6" (7.4)	11.5"

* For prolonged applications in temperatures above 800°F (427° C) use of stainless steel coupling is recommended.

Order Information HT3IU- 20 - 33 - C - A350 - LF2 - SCH 80, 160 or XXH

Size	Plain end	Threaded end	Material
1" 1.0 - 0.250 inch (25.2 mm)	1. Internally threaded NPT		<ul style="list-style-type: none"> • Carbon steel A350/LF2 • Stainless steel 304/316/316L dual grade/duplex • Other materials available (eg. Monel, Hastelloy, Inconel) *• Coatings (eg. Zinc, Cadmium, Teflon) available
2" 2.0 - 0.375 inch (50.4 mm)	2. Externally threaded NPT		
3" 3.0 - 0.500 inch (75.6 mm)	*3. Butt weld		
4" 4.0 - 0.750 inch (100.8 mm)	4. Socket weld male		
6" 6.0 - 0.750 inch (151.2 mm)	5. Socket weld female		
	* Higher pressure		

Note: For other materials, sizes and pressure ratings, consult Hiltap. Seal caps/plugs and dust caps are available

Safe, Environmentally friendly, Quality products.
Patented, Patents pending.
1-800-661-6150 Toll-free U.S. only
(403) 250-2986 Canada (403) 291-3592 Fax
www.hiltap.com

Distributed by: _____