

A

B

C

D

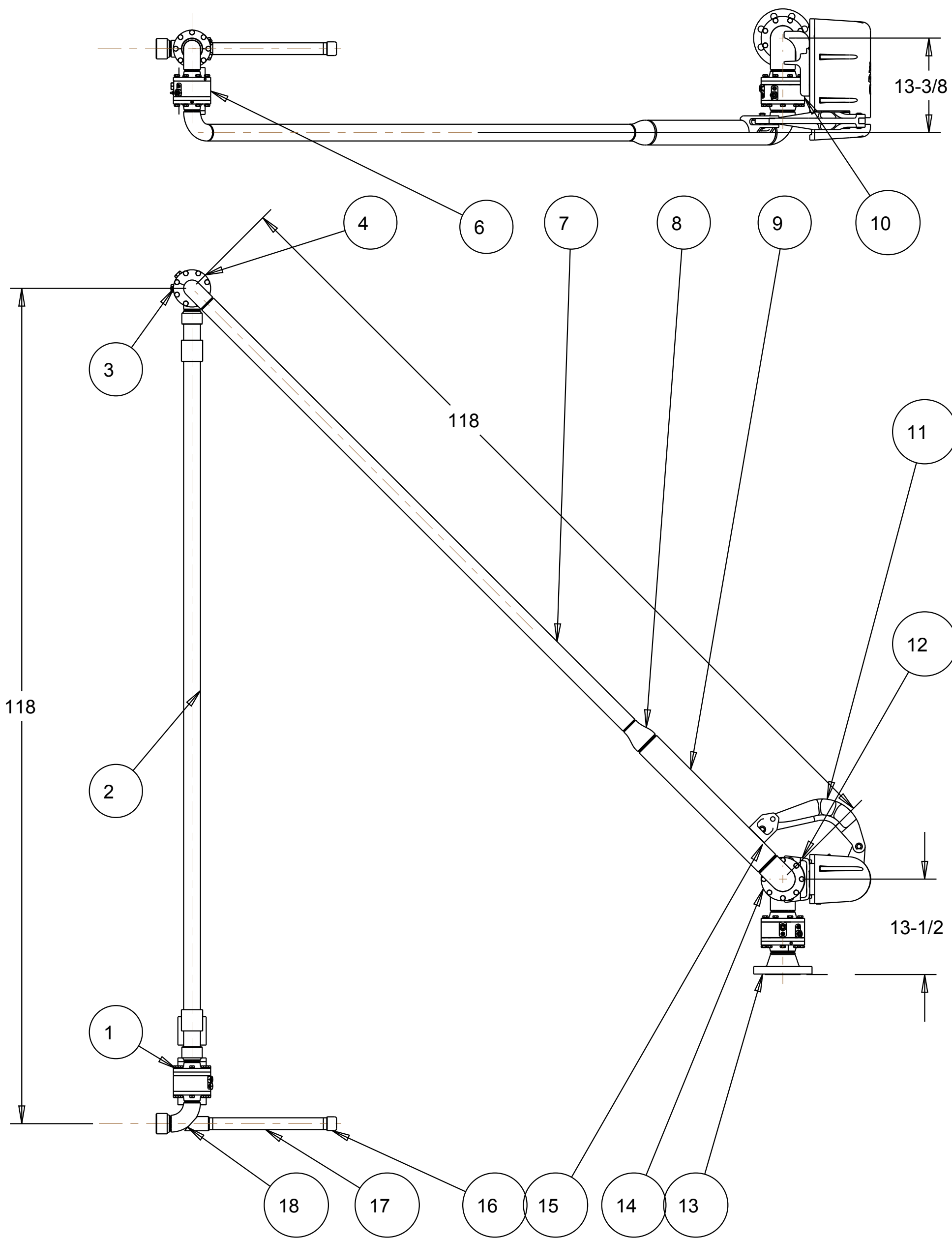
E

MATERIALS OF CONSTRUCTION	CARBON STEEL
SWIVEL JOINT SEALS	FLUOROCARBON
PRODUCT	LPG
MOMENT LOAD AT SUPPORT	7,900 IN/LBS
ESTIMATED WEIGHT	260 LBS
TEST PRESSURE	300
PRODUCT RETENTION	NO
RADIOGRAPHIC INSPECTION	YES, 5%
WEIGHT BY OTHERS	NOT TO EXCEED 10 LBS
TIG PURGE	NO

THIS DRAWING IS NOT TO BE SCALED. FOR ADDITIONAL INFORMATION, PLEASE CONTACT OUR ENGINEERING DEPT.

REVISIONS					
LTR	ECN #	DESCRIPTION	DRAWN	APPROVED	DATE
-	-	-	-	-	-

21	1	EA	H32341M	RADIOGRAPHIC INSPECTION REQUIRED
20	1	EA	LADOC-STD	LOADING ARM, NAME TAG AND HARDWARE
19	2	EA	LSK-8000-0302	LOADER SEAL KIT, 8000, FLUOROCARBON GFLT, 3"
18	1	EA	C21286	ASM,SF x LRE x WC,w/X-CPLR,CST,DSF,2"
17	1	EA	HX99261	PIPE PKG, CST, SCH.80, 1-1/4"
16	1	EA	H-07055-M	CAP, PIPE, CST, 1-1/4"
15	1	EA	C20784EW	BRK'T,PIN LUG,DSF, SST, 3"
14	1	EA	C20686	WLDT, SF x SRE, 3" CST DSF
13	1	EA	C20624	WLDT, SF x F 300#, 3" CST DSF
12	1	EA	C20785	ASM, BU STYLE, DFRH/UFLH,CST, DSF,3"
11	1	EA	790BLH-0035	LEFT HAND EZ ADJUST 'B' SPRING BALANCE
10	2	EA	C20561	MODULE,SWIVEL,CST,DSF,3"
9	1	EA	HX99261	PIPE PKG, CST, SCH.40, 3"
8	1	EA	H-10280-M	REDUCER, CONC, S40, CST, 3" x 2"
7	1	EA	HX99261	PIPE PKG, CST, SCH.40, 2"
6	2	EA	C20723	MODULE,SWIVEL,CST,DSF,2"
5	2	EA	LSK-8000-0202	LOADER SEAL KIT, 8000, FLUOROCARBON GFLT, 2"
4	1	EA	C20735	ASM,SF x LRE,CST,DSF,2"
3	1	EA	C20740	ASM,SF x LRE x WC,CST,DSF,2"
2	1	EA	HX99262	2" SST FLEXHOSE, 103 OAL, LPG USE
1	1	EA	C20733	ASM,SF x WC,CST,DSF,2"
ITEM	QTY	UM	PART NUMBER	DESCRIPTION



CONFIDENTIAL THIS DOCUMENT CONTAINS INFORMATION WHICH IS PROPRIETARY TO OPW, AND SHOULD BE PROTECTED ACCORDINGLY.

UNLESS OTHERWISE SPECIFIED  
 TOLERANCES ON DIMENSIONS:  
 3 DECIMALS ± 0.005  
 2 DECIMALS ± 0.015  
 1 DECIMAL ± 0.020  
 ANGLES ± 30'  
 ALL CORNERS .020 R OR BREAK  
 MACHINED SURFACES: 125 RMS MAX  
 ALL DIAMETERS MUST NOT EXCEED  $\frac{1}{16}$ "  
 DIMENSIONS PER ANSI Y14.5M-1994

SIGNATURES		MO-DA-YR
DRAWN:	JLP	10-NOV-23
CHECKED:	-	-
MATERIAL:	CST	WEIGHT: 301.816#

DESCRIPTION: 3" X 2" LOADING ARM, CST, DSF, UFLH

REV: -	PART NUMBER: ELPG32F-J368
SIZE: C	SCALE: 0.075
SHEET 1 OF 2	

OPW **Engineered Systems**  
 Lebanon, Ohio 45036 USA  
 3D GENERATED DRAWING

A

B

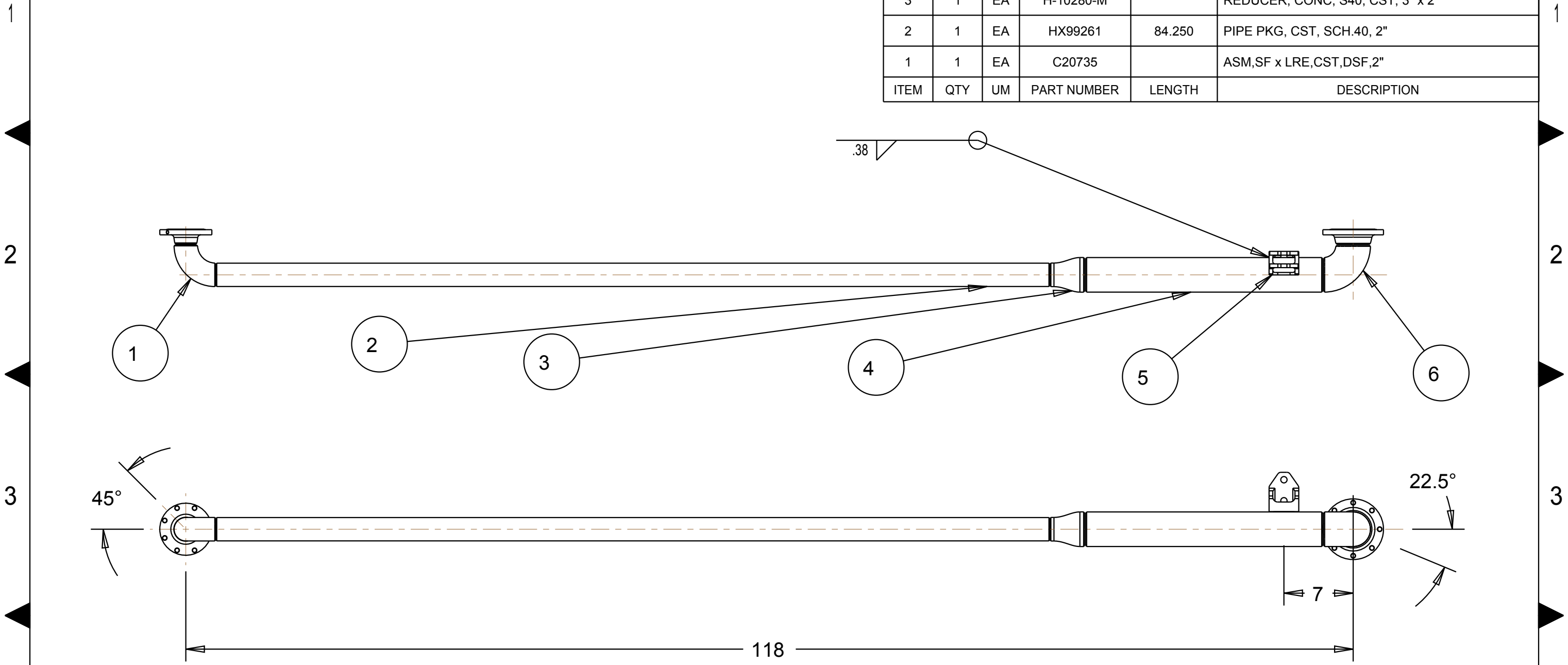
C

D

E

THIS DRAWING IS NOT TO BE SCALED. FOR ADDITIONAL INFORMATION. PLEASE CONTACT OUR ENGINEERING DEPT.

ITEM	QTY	UM	PART NUMBER	LENGTH	DESCRIPTION
6	1	EA	C20686		WLDT, SF x SRE, 3" CST DSF
5	1	EA	C20784EW		BRK'T,PIN LUG,DSF, SST, 3"
4	1	EA	HX99261	24.000	PIPE PKG, CST, SCH.40, 3"
3	1	EA	H-10280-M		REDUCER, CONC, S40, CST, 3" x 2"
2	1	EA	HX99261	84.250	PIPE PKG, CST, SCH.40, 2"
1	1	EA	C20735		ASM,SF x LRE,CST,DSF,2"



- NOTES:
1. WELDING PER OPW WELD SPECIFICATIONS. REFERENCE APPLICABLE WELD SPECIFICATIONS PER COMPONENT.
  2. COMPONENT FACE(S) PERPENDICULAR TO CENTER LINE(S)  $\pm 5^\circ$
  3. ALL FLANGE BOLT HOLES TO STRADDLE CENTER LINE(S)
  4. PROTECT FLANGE FACE(S) AND MACHINED SURFACES WHEN WELDING
  5. ALIGN COMPONENTS AS SHOWN  $\pm 2^\circ$

DESCRIPTION:		3" X 2" LOADING ARM, CST, DSF, UFLH	
REV:	-	PART NUMBER:	
SIZE:	<b>C</b>	<b>ELPG32F-J368</b>	
SCALE: 0.100		SHEET 2 OF 2	
		 A DOVER Resources Company Lebanon, Ohio 45036 USA	
		3D GENERATED DRAWING	