

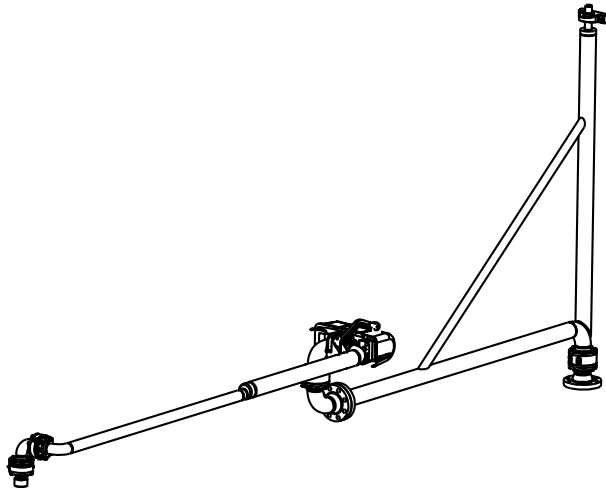
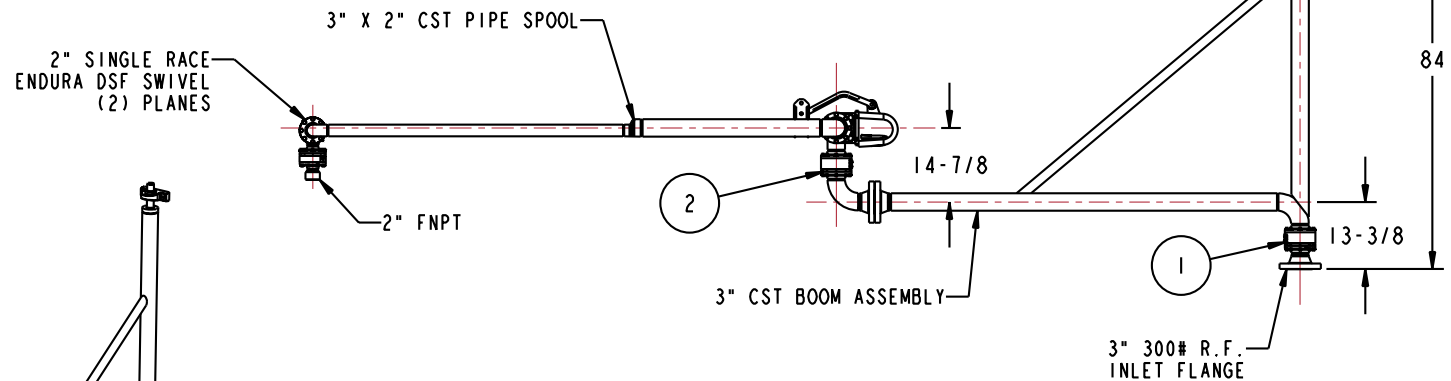
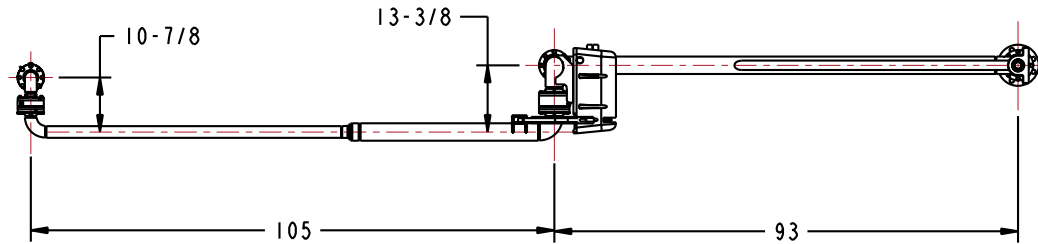
MATERIALS OF CONSTRUCTION	CARBON STEEL
SWIVEL JOINT SEALS	VITON GFLT
PRODUCT	LPG
ESTIMATED WEIGHT	525 LBS
MOMENT LOAD AT SPRING	12,850 IN-LBS
MOMENT LOAD AT INLET	54,000 IN-LBS
FLANGE GASKETS	KLINGER SIL C5400
TEST PRESSURE	350 PSI
PRODUCT RETENTION	NO
WEIGHT BY OTHERS	HOSE, VALVE AND FITTINGS NOT TO TO EXCEED 40 LBS
ALL FLOW PASSAGE PIPE	SCH 40 A106 GR B SEAMLESS
ALL FLANGE CONNECTIONS	300# RAISED FACE

4	1	EA	H-01180-M	PILLOW BLOCK BEARING
3	1	EA	790CLH-0045	EZ ADJUST TORSION SPRING BALANCE
2	1	EA	8476FW-G407	3" X 2" SWIVEL ASSY, ENDURA DSF, CST
1	1	EA	8430FW-G405	3" SWIVEL ASSY, DSF, CST
ITEM	QTY	UM	PART NUMBER	DESCRIPTION

- H30486M 8 BOLT
- H06455M 8 NUT
- H02510M 8 WASHER
- H30485M 1 GASKET
- H02209PA 1 INSTRUCTION SHEET
- H30446M 1 ALUM NAME PLATE

THIS DRAWING IS NOT TO BE SCALED. FOR ADDITIONAL INFORMATION, PLEASE CONTACT OUR ENGINEERING DEPT.

REVISIONS					
LTR	ECN #	DESCRIPTION	DRAWN	APPROVED	DATE
-	-	-	-	-	-



CONFIDENTIAL THIS DOCUMENT CONTAINS INFORMATION WHICH IS PROPRIETARY TO OPW, AND SHOULD BE PROTECTED ACCORDINGLY.

DESCRIPTION: 3" X 2" LPG ARM, LH

UNLESS OTHERWISE SPECIFIED
 TOLERANCES ON DIMENSIONS
 3 DECIMALS +/- 0.005
 2 DECIMALS +/- 0.015
 1 DECIMAL +/- 0.030
 ANGLES +/- 1/2 DEG
 MACHINED SURFACES 125 RMS MAX

SIGNATURES		MO-DA-YR
DRAWN:	BJB	4/29/08
CHECKED:	-	-
MATERIAL:	-	-
WEIGHT:	-	-

REV: -
 SIZE: D

PART NUMBER:
EB32F-G404

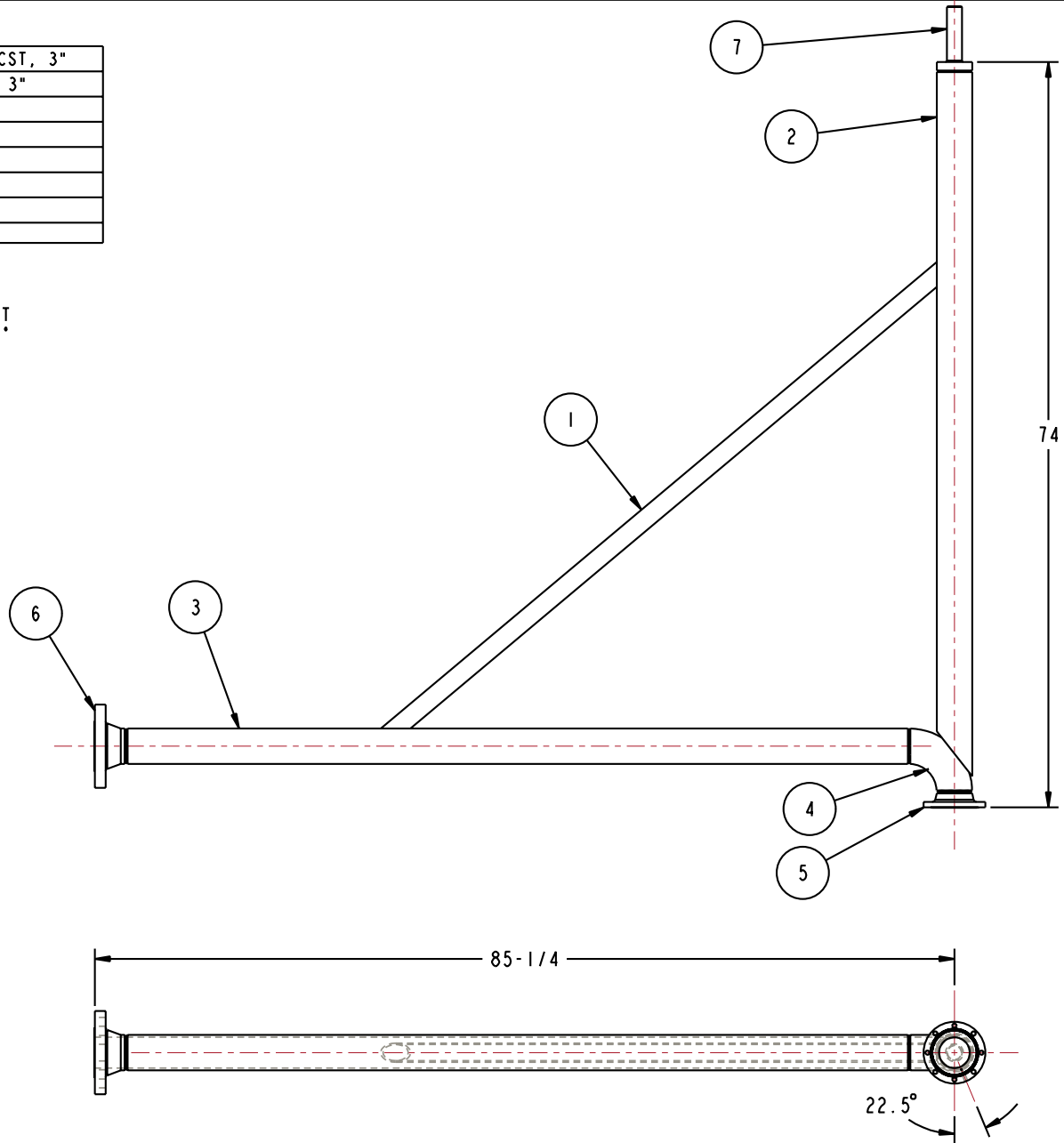
OPW **Engineered Systems**
 A **ROBERT** Resources Company
 Lebanon, Ohio 45036 USA
 SCALE: 0.055 SHEET 1 OF 3 3D GENERATED DRAWING

THIS DRAWING IS NOT TO BE SCALED. FOR ADDITIONAL INFORMATION, PLEASE CONTACT OUR ENGINEERING DEPT.

ITEM	QTY	UM	PART NUMBER	DESCRIPTION
7	1	EA	H-10231-RS	SHAFT STUB, LOADING ARM, CST, 3"
6	1	EA	H-30058-M	FLG, 300, RFWN, S40, CST, 3"
5	1	EA	C-20534-RS	FLANGE, DSF, CST, 3"
4	1	EA	H-10229-M	ELBOW, LR, S40, CST, 3"
3	1	FT	HX96145	77.630 3" SCH 40 SMLS CST PIPE
2	1	EA	HX96145	69.880 3" SCH 40 CST PIPE
1	1	EA	HX96145	72.000 1-1/2" SCH 80 CST PIPE

NOTES:

1. WELDING PER OPW WELD SPEC. W-1, W-4, W-5, W-8, W-9. REFERENCE APPLICABLE WELD SPECIFICATIONS PER COMPONENT
2. COMPONENT FACE(S) PERPENDICULAR TO CENTER LINE(S) $\pm .5^\circ$
3. ALL FLANGE BOLT HOLES TO STRADDLE CENTER LINE(S)
4. PROTECT FLANGE FACE(S) AND MACHINED SURFACES WHEN WELDING
5. ALIGN COMPONENTS AS SHOWN $\pm 2'$



CONFIDENTIAL THIS DOCUMENT CONTAINS INFORMATION WHICH IS PROPRIETARY TO OPW, AND SHOULD BE PROTECTED ACCORDINGLY.

DESCRIPTION:

3" X 2" LPG ARM, LH

UNLESS OTHERWISE SPECIFIED
 TOLERANCES ON DIMENSIONS
 3 DECIMALS +/- 0.005
 2 DECIMALS +/- 0.015
 1 DECIMAL +/- 0.030
 ANGLES +/- 1/2 DEG
 MACHINED SURFACES 125 RMS MAX

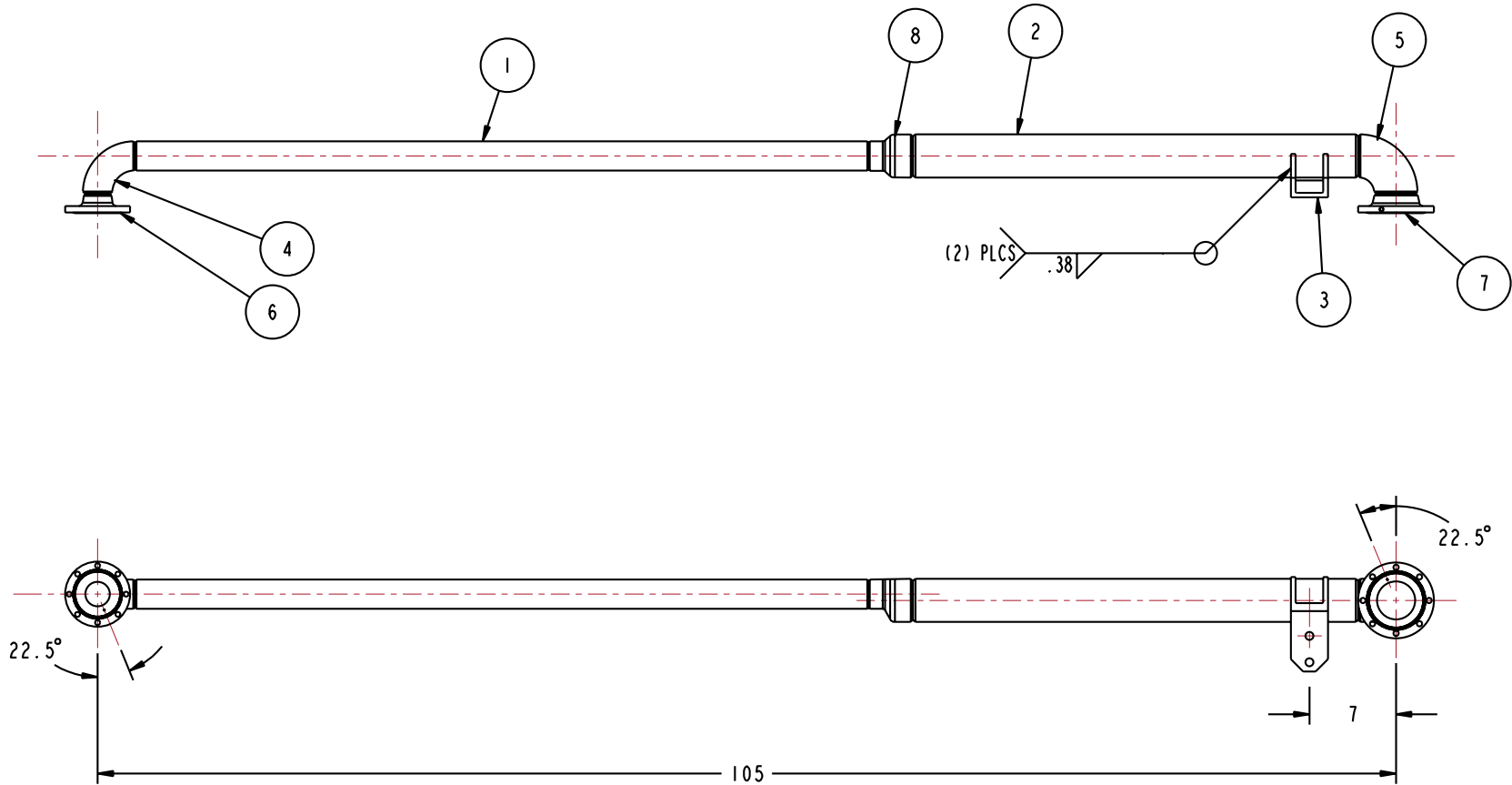
SIGNATURES		MO-DA-YR
DRAWN:	BJB	4/29/08
CHECKED:	-	-
MATERIAL:	-	-
WEIGHT:	-	-

REV: -
 SIZE: D

PART NUMBER:
EB32F-G404

OPW Engineered Systems
 A BOSTED Resources Company
 Lebanon, Ohio 45036 USA
 SCALE: 0.070 SHEET 2 OF 3 3D GENERATED DRAWING

THIS DRAWING IS NOT TO BE SCALED. FOR ADDITIONAL INFORMATION, PLEASE CONTACT OUR ENGINEERING DEPT.



- NOTES:
1. WELDING PER OPW WELD SPEC. W-1, W-4, W-5, W-8, W-9. REFERENCE APPLICABLE WELD SPECIFICATIONS PER COMPONENT
 2. COMPONENT FACE(S) PERPENDICULAR TO CENTER LINE(S) $\pm 5^\circ$
 3. ALL FLANGE BOLT HOLES TO STRADDLE CENTER LINE(S)
 4. PROTECT FLANGE FACE(S) AND MACHINED SURFACES WHEN WELDING
 5. ALIGN COMPONENTS AS SHOWN $\pm 2^\circ$

ITEM	QTY	UM	PART NUMBER	DESCRIPTION
8	1	EA	H-31392-M	REDUCER, ECC, S40, CST, 3 X 2
7	1	EA	C-20534-RS	FLANGE, DSF, CST, 3"
6	1	EA	C20658RS	FLANGE, CST, 2" DSF
5	1	EA	H-03821-M	ELBOW, SR, S40, CST, 3"
4	1	EA	H-30373-M	ELBOW, LR, S40, CST, 2"
3	1	EA	HX89739	BRACKET, PIN LUG, CST, 3"
2	1	EA	HX96145	36.000 3" SCH 40 SMLS CST PIPE
1	1	EA	HX96145	59.250 2" SCH 40 SMLS CST PIPE

CONFIDENTIAL THIS DOCUMENT CONTAINS INFORMATION WHICH IS PROPRIETARY TO OPW, AND SHOULD BE PROTECTED ACCORDINGLY.		DESCRIPTION: 3" X 2" LPG ARM, LH	
UNLESS OTHERWISE SPECIFIED TOLERANCES ON DIMENSIONS 3 DECIMALS +/- 0.005 2 DECIMALS +/- 0.015 1 DECIMAL +/- 0.030 ANGLES +/- 1/2 DEG MACHINED SURFACES 125 RMS MAX		SIGNATURES	MO-DA-YR
DRAWN: BJB		4/29/08	
CHECKED: -		REV: -	
MATERIAL: -		SIZE: D	
WEIGHT: -		PART NUMBER: EB32F-G404	
SCALE: 0.070		SHEET 3 OF 3	
		3D GENERATED DRAWING	

OPW **Engineered Systems**
A **ROBERT** Resources Company
Lebanon, Ohio 45036 USA