



# Hybrid Entry Fitting (HEF) Installation Instructions

Part Number: 215159  
Issue Date: 02-10-2022  
REV D

# IMPORTANT INFORMATION FOLLOW ALL INSTRUCTIONS

**NOTICE:** OPW system components may only be installed and serviced by a factory trained and currently certified installer in order for the product warranty to be valid. The use of non-certified personnel or any deviations from these written procedures could result in damage or leakage of the system and void the product warranty. Contact OPW's Customer Service Department for more information at 1-800-422-2525.

Please read these warnings and use and assembly instructions completely and carefully before starting. Failure to do so may cause product failure, or result in environmental contamination due to liquid leakage into the soil, creating hazardous spill conditions.

### OPW STANDARD PRODUCT WARRANTIES

FLEXWORKS™ by OPW, Inc., VAPORSAVER™ and all other OPW products must be used in compliance with all applicable federal, state, provincial and local laws, rules and regulations. Product selection must be based on physical specifications and limitations, compatibility with the environment and material to be handled. All illustrations and specifications in the literature are based on the latest production information available at the time of publication. Prices, materials and specifications are subject to change at any time, and models may be discontinued at any time, in either case, without notice or obligation.

OPW warrants solely to its customer that the following products sold by OPW will be free from defects in materials and workmanship under normal use and conditions for the periods indicated:

Product	Warranty Period
FlexWorks Primary Pipe	10 years from date of manufacture
All Products Certified to California Standards *	1 year from date of manufacture or from date of installation registration (not to exceed 15 months from date of manufacture)
All other Products	1 year from date of manufacture

\* Products certified to California 2001 Standards will have an OPW Registration Card enclosed/attached to the product.

OPW's exclusive obligation under this limited warranty is, at its option, to repair, replace or issue credit (in an amount not to exceed the list price for any defective product) for future orders for any product that may prove defective within the applicable warranty period (repairs or replacements are subject to prorated warranty coverage for remainder of the original warranty period). Complete and proper warranty claim documentation and proof of purchase required. All warranty claims must be made in writing and delivered during the applicable warranty period to OPW at 9393 Princeton Glendale Rd., Hamilton, Ohio 45011, Attention: Customer Service. No products may be returned to OPW without its prior written authority.

This limited warranty shall not apply to any FLEXWORKS™ or VAPORSAVER™ product unless it is installed by an OPW attested installer. This limited warranty also shall not apply to any FLEXWORKS™, VAPORSAVER™ or other OPW product: unless all required site and warranty registration forms are completed and received by OPW within 60 days of installation; unless all piping connections are installed with a nationally-recognized or state-approved leak detection device in each tank and dispenser sump (which are not for storage and from which all discharge hydrocarbons must be removed, and the systems completely cleaned, within 24 hours); unless testable sumps utilize FLEXWORKS™ pipe and access fittings; unless a sump inspection log or an EPA recommended/required checklist is maintained and the results are furnished to OPW upon request; and unless OPW is notified within 24 hours of any known or suspected product failure and is provided with unrestricted access to the product and the site. This limited warranty also shall not apply to any product which has been altered in any way, which has been repaired by anyone other than a service representative authorized by OPW, or when failure or defect is due to: improper installation or maintenance (including, without limitation, failure to follow all FlexWorks™ Installation Manuals and Installation Guides and all product warning labels); abuse or misuse; violation of health or safety requirements; use of another manufacturer's, or otherwise unauthorized, substances or components; soil or other surface or subsurface conditions; or fire, flood, storm, lightning, earthquake, accident or any other conditions, events or circumstances beyond OPW's control.

THIS LIMITED WARRANTY IS IN LIEU OF ALL OTHER WARRANTIES, EXPRESS OR IMPLIED, AND ALL OTHER WARRANTIES INCLUDING, WITHOUT LIMITATION, THE WARRANTIES OF MERCHANTABILITY.

ITY AND FITNESS FOR A PARTICULAR PURPOSE, ARE HEREBY EXCLUDED. OPW shall have no other liability whatsoever, whether based on breach of contract, negligence, gross negligence, strict liability or any other claim, including, without limitation, for special, incidental, consequential or exemplary damages or for the cost of labor, freight, excavation, clean-up, downtime, removal, loss of profit, or any other cost or charges. No person or entity is authorized to assume on behalf of OPW any liability beyond this limited warranty. This limited warranty is not assignable.

**STORAGE & TRANSIT NOTE:** OPW piping systems should be installed by OPW trained and certified personnel and the use of non-qualified personnel or any deviations from these recommended procedures could result in damage or leakage of the system.



**WARNING**

**FAILURE TO COMPLY WITH THE FOLLOWING WARNING COULD RESULT IN PROPERTY DAMAGE, INJURY OR DEATH.**




**WARNING**

**FIRE AND EXPLOSION HAZARD**

Using electrically operated equipment near gasoline or gasoline vapors may result in a fire or explosion, causing personal injury and property damage. Be sure that the working area is free from such hazards, and always use proper precautions.

FlexWorks™ piping systems are for use as underground piping for primary carrier and secondary containment for motor vehicle fuels, aviation, and marine fuels.

**NOTE:** Failure to secure written approval from OPW concerning non-warranted fuels and liquid chemicals, will void the product warranty and could potentially cause environmental damage or personal injury.

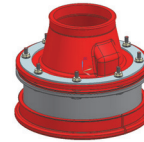
**NOTE:** Fittings have been evaluated per UL/ULC for use with DS, DSE, DSF, DSL, DSW, DP, EL, FCS, FTS, PST, S, TS and AXP series of products. Failure to use recommended combinations of sump products in a completed assembly may cause damage or leakage.

**STORAGE & TRANSIT NOTE:** Sump products are not intended for storage in excessive temperatures or direct sunlight. Rough handling may cause damage and leaking in use. Visually inspect sump prior to installation to ensure no damage. Damaged product shall not be used.

**Installation Tools Required:**

- Drill with 5/16" drill bit.
- Hole saw (See Step #2)
- Drill

- Torque Wrench
- 7/16" Socket
- 9/32" or 7mm Socket



Entry Fitting	For Use With
HEF-0751	0.5", 0.75", 1" Rigid Conduit
HEF-4075	0.75" FlexWorks Double Wall Pipe and SPC-0075 or SBC-2075
HEF-4010	1" FlexWorks Double Wall Pipe and SPC-0100 or SBC-2100
HEF-4175	Double Snout, 0.75" or 1" FlexWorks Double Wall Pipe and SPC-0075, SBC-2075, SPC-0100, or SBC-2100
HEF-4015	1.5" FlexWorks Double Wall Pipe and BMA-1515, DPC-2150A, SPC-0150A, or SBC-2150
HEF-4020	2" FlexWorks Double Wall Pipe and BMA-2020, DPC-2200A, SPC-0200A, or SBC-2200
HEF-6030	3" Flexworks Double Wall Pipe and BMA 3030, DPC-2300A or SPC-0300A

**Hybrid Entry Fittings**

Hybrid Entry Fittings are designed to seal pipe entries through containment sump and above ground walls. For proper installation, a template (supplied with fitting) must be used for accurate hole drilling. **Rigid fittings cannot be installed on round surfaces.**

**Step #1 (See Figure 1)**

Locate and mark the center of the pipe entry point in the flat wall section of the sump. Drill a 5/16" hole in each location. Once the holes are drilled remove the template from the sump and proceed to step number 2.

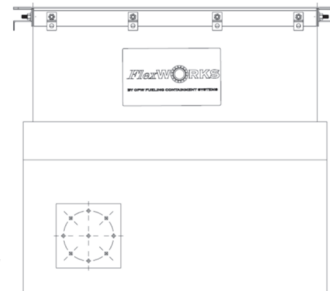


Figure 1

**Step #2 (See Figure 2, and Figure 2A)**

Drill out the entry fitting opening with the appropriate size hole saw using the center hole as a guide. Clean any rough edges.

**IMPORTANT:** The correct hole saw size must always be used for proper installation of Entry Fittings.

Hole Saw	Entry Fitting
HEF-0751	2-1/2" Hole Saw
HEF-4015, HEF-4020, HEF-4175, HEF-4075, HEF-4010	4" Hole Saw
HEF-6030	5-3/4" Hole Saw

**NOTE:** Only use hole saws that are sharp and in good condition. Use caution to prevent injury. The hole saw may catch unexpectedly and rotate drill.

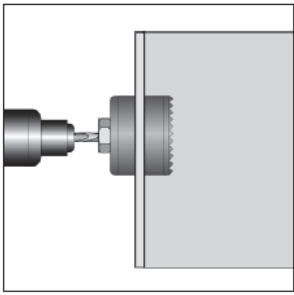


Figure 2

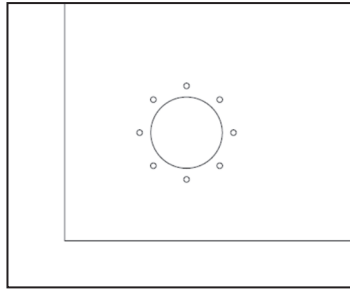


Figure 2A

**Step #3 (See Figure 3)**

Install the gasket on the body and place through the holes in the sump. From the inside of the sump, install the inner component of the boot, compression ring and nuts by hand.

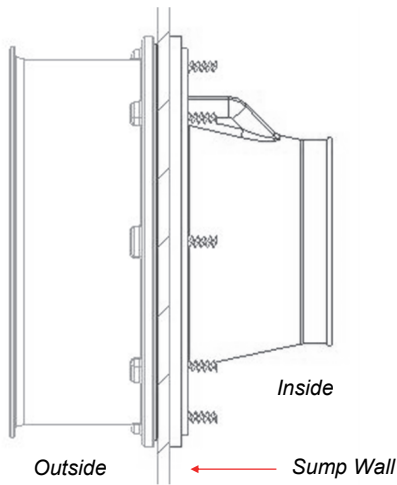
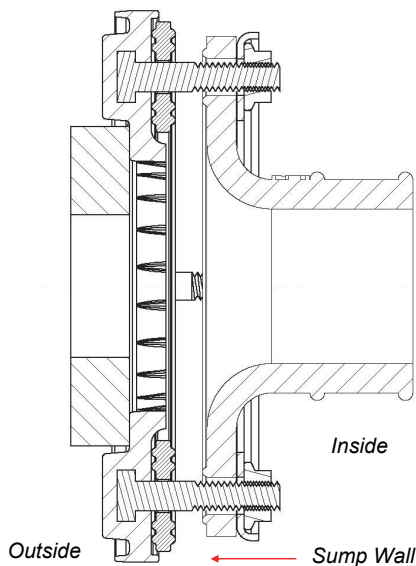


Figure 3

**When Using Access Pipe**



**Step #4 (See Figure 4 and 4A)**

Using a torque wrench, tighten each bolt, in increments, to 60 in-lb using a star pattern as illustrated below. Tighten 3/4" and 1" fittings in a criss-cross pattern evenly.

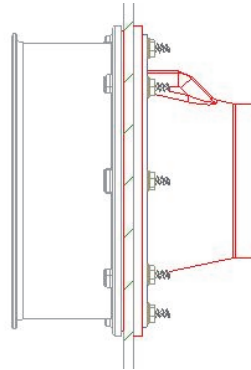


Figure 4

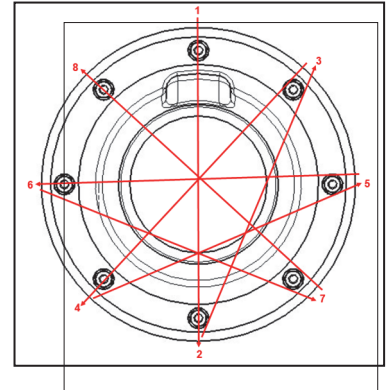


Figure 4A

**Entry Fitting Sealants**

OPW does not recommend the use of sealants when installing entry fittings on poly sumps, however, the proper application of approved sealants on the sealing surface of our entry fittings is acceptable to OPW.

The sealant(s) must be compatible with all contacted entry fitting materials, all ground environments and any fuels that may be secondarily contained within the sumps being sealed. OPW in no way warrants the performance of the sealant and is in no way responsible for any environmental release resulting from the use of said sealant(s). All entry fittings must be installed in accordance with OPW's written installation instructions by a currently certified installer.

If you choose to use a sealant, OPW recommends the following sealants for use with our entry fittings and sumps: **Bostik 920 FS Fast Set, marine grade urethane sealant; SL-1100 Urethane Sealant; Thiokol 1100 Industrial polysulfide joint sealant or PR 1440 Class B Fuel Tank sealant.**

**Note:** Be sure all manufacturers' installation and application instructions are followed.

**Step #5 (See Figure 5, Figure 5A and Figure 5B)**

**NOTE:** FOR DIRECT BURY, PROCEED TO STEP 7.

Cut the AXP Piping between two ribs then install two seals on the two end grooves of the AXP piping as shown. Lubricate the interior surface of the fitting, then insert the AXP piping into the body.

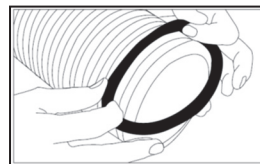


Figure 5

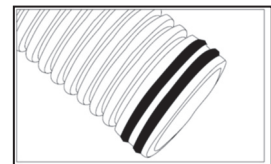


Figure 5A

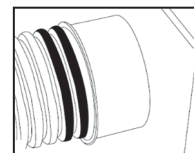


Figure 5B

**NOTE:** Crush protector is built into the fitting.

**Step #6 (See Figure 6 and Figure 6A)**

Install the AXP clamshell around the fitting and the AXP piping. Install the band clamp to 30—35 in-lbs.

**Note:** Per California SB-989, all metal must be protected from direct contact with the elements. Coat stainless steel band clamps with the following approved coatings: OPW SL-1100, 3M Underseal 08883 or Polyguard Mastic CA-9.

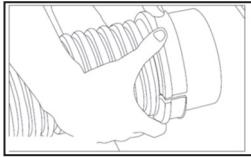


Figure 6

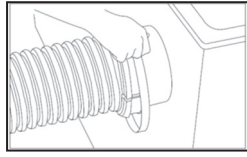
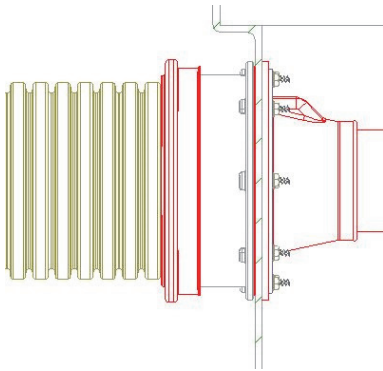


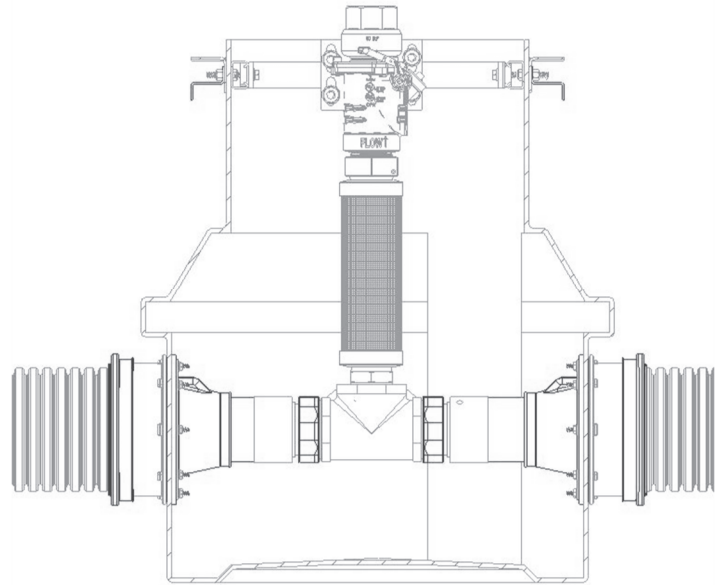
Figure 6A

**Step #7**

Insert the pipe or conduit into the entry boot from outside of the sump. Tighten the inner band clamp to 30 in. lbs. Do not over tighten.



**NOTE:** HEF models ending in “G” include a grommet for use with a heat trace cable in DEF applications. Grommet has 0.24” x 0.55” slot for use with a flat cable. Tighten dome nut to approximately 30 in-lbs.



**Reference Illustration of Installation:**

**Angled Entries**

The flexible entry boot is designed to permit angled pipe or conduit entries up to 15° off the centerline. Angles greater than 15° could prevent the boot from sealing around the pipe or conduit, and will void the product warranty.

**Round Surface Installations**

Standard hybrid entry fittings **CANNOT** be installed on round surfaces. “RD” style hybrid entry fittings or ‘ROUNDKIT’ kits must be used with round surfaces.

**NOTE:** Keep fiberglass cleaning solvents away from the entry fittings to prevent damage.

**APPENDIX A**

**OPW APPROVED LUBRICANTS**

**NOTE: Always read MSDS sheets carefully before using any chemical.**

- ◆ Parker O-Lube
- ◆ Black Moly Grease
- ◆ Ru Glyde Rubber Lubricant
- ◆ Super Lube Synthetic Grease