

ABOVE GROUND MAINTENANCE, ABOVE & BEYOND PERFORMANCE



NEW High-Flow Loop System

OPW 
RETAIL FUELING
a **DOVER** company

opwglobal.com

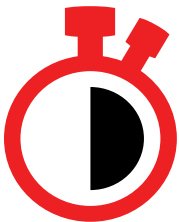
Loop
SYSTEM

DEFINING | WHAT'S NEXT

ABOVE GROUND MAINTENANCE, ABOVE & BEYOND PERFORMANCE

The **Loop System** from OPW is a revolutionary collection of underground fueling equipment that eliminates the need to break concrete for maintenance or repair tasks. Each component contributes to an efficient fuel-dispensing network where all service can be conducted above ground.

Fueling stations, contractors and distributors can all benefit from this cost-effective system. Features like prefabricated sumps, factory-installed entry fittings, elimination of shear valve riser pipes, built-in test ports and fewer pipe connections make for shorter install times, significant savings and easy access for maintenance. The Loop System is now built to handle high-flow applications, such as diesel-fueling operations for large trucks.



**50% Faster
Installation
Times**



**100%
Accessible
No Breaking
Concrete**



**Double
Containment
Protection**

Faster Install = Lower Costs and More Uptime

- Sumps pre-assembled at factory
- Cuts installation time from 4-5 days to 1
- Requires fewer people to make piping connections
- Fittings do not require stripping of jackets
- Do not have to wait for glues to cure or welding dwell times

Lower Overall Cost; Helps Prevent Downtime Losses

- All primary piping is contained in access pipe for easy removal
- 45-degree sump wall angles allow pipe to be retracted through sump without the need to remove the dispenser
- Shallow bury sumps allow access to the bottom of sump beneath dispenser from above grade
- Fitting repair or cleaning out of sump can be accomplished above grade through the dispenser door

Reduces Risk of Environmental Mishaps, Non-Compliance and Fines

- OPW UL 971-listed double-wall pipe with more than 20 years of proven performance
- Flexible piping allows continuous runs between all sumps, eliminating any joints or piping connections buried in the ground
- No buried joints mean no potential leaks directly into the underground environment
- Access pipe resists crushing and punctures while protecting the primary pipe and provides another layer of protection against exposure to the environment

CASE STUDY

ENGLEFIELD OIL · MARION, OH



Time is Money – Layton Excavating, Inc., installed an entire piping system in one day for longtime customer Englefield Oil. What would have taken 3-4 days with a traditional system was over in a pinch, and the process created a more secure and environmentally conscious fueling location. This ease of installation for the contractor is a result of easy-to-service sumps, couplings and piping, which creates benefits for all parties involved. The contractor saved time, and the station owner experienced significant savings in excavation and backfill costs for a system that can be completely serviced above ground without the need to break concrete.

- 1,500 ft of Pipe
- 48 Couplers
- 24 Piping Runs
- 4 Tanks

**Install Time:
5 Hours**

"I greatly appreciate the people and the product that OPW has. They are very dependable," said John Gordon, Vice President, Construction and Environmental, Englefield Oil Company. "With the many Loop Systems that I have put in by OPW, I have the confidence and ability to sleep at night knowing that I have put the best product available under the ground."



Completely Testable



End-to-End Monitoring



Fewer Parts to Stock and Install

Peace-of-Mind Assurance

- Shallow sumps allow quicker and less expensive hydrostatic testing (now required every 3 years by the EPA)
- Built-in test ports on stainless steel double-wall coupling eliminates the need for temporary rubber test boots
- Permanent test ports allow easy re-testing or continuous monitoring of piping interstitial space

Total Underground System Visibility and Rapid Response

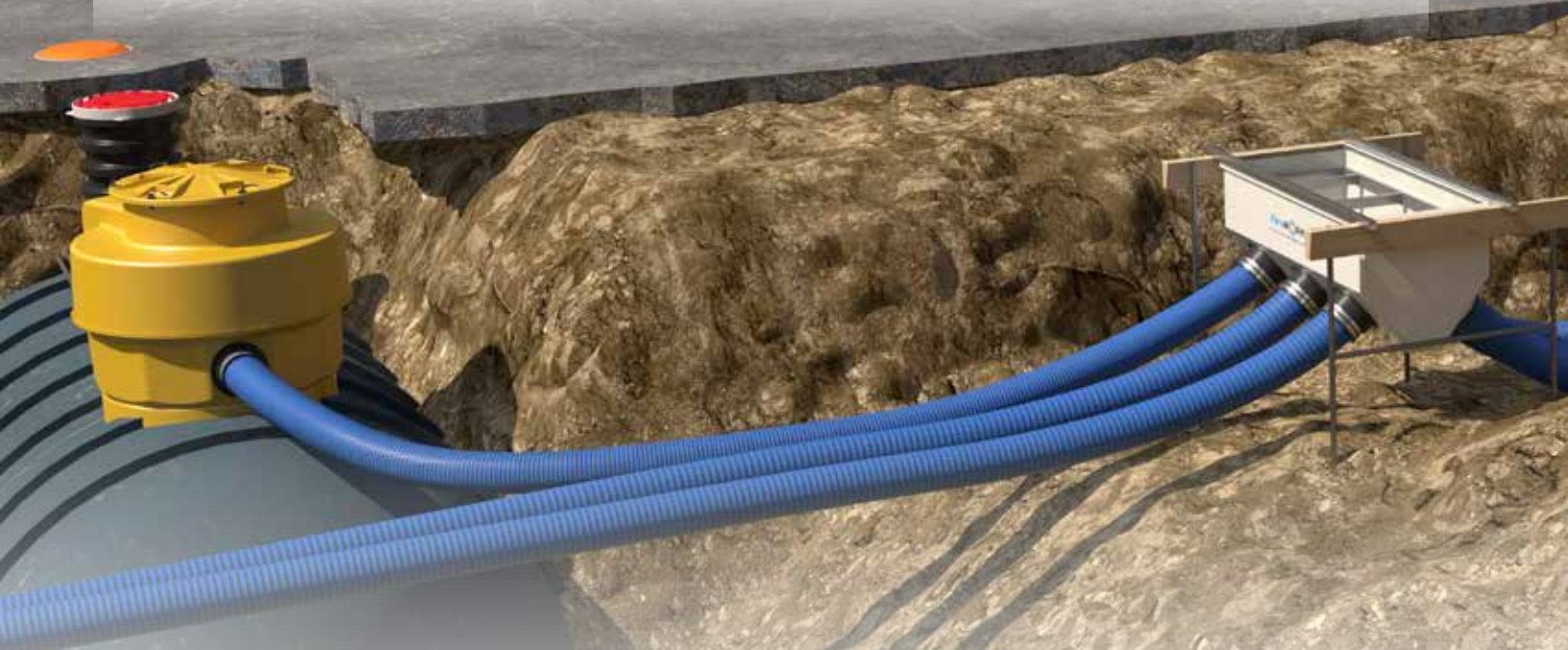
- Stainless-steel couplings with built-in test ports and rugged test assemblies allow vacuum or brine continuous monitoring of the piping system
- Small interstitial space in OPW double-wall piping makes detecting a leak quicker and simpler than other double-wall piping systems
- Piping can be removed and inspected without breaking concrete
- Shallow sumps bring components close to the surface for easy inspection or testing

Saves Time, Money and Hassles

- Easy to order
- One Loop part number includes the sump, entry fittings, stabilizer bars and shear valves
- Distributors can easily spec out material list with pre-fabricated part numbers and fewer line items
- Fewer loose parts for contractor to manage at busy job sites and cluttered job trailers

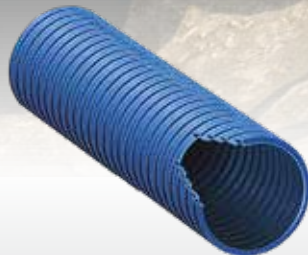
Loop SYSTEM

The state-of-the-art **Loop System** is made possible by a collection of completely integrated, environmentally secure components. These pre-fabricated, factory-assembled pieces translate into dramatically less field labor, associated cost and potential for installation errors. Total underground access once installed provides hassle-free inspection, maintenance and repair without excavation. Learn more about each of the contributing parts.



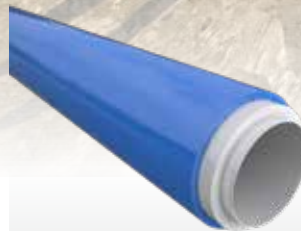
ELECTROTITE TANK SUMPS

- Eliminate the need to cut holes in sump for conduits
- Reduce the number of entry and leak points
- Allow space to re-route communication wires and loop additional sensors without entering sump
- Integrated factory-installed junction box for seal-offs and wiring connections



DUAL-LAYER ACCESS PIPES

- Resist crushing
- Add extra layer of protection
- Allow for easy maintenance, repair, removal and replacement without breaking concrete



UL 971-LISTED COAXIAL PIPES

- Easy installation
- Eliminate leak points and exposed joints and fittings buried in the ground
- Do not require adhesives, glues or welding



DUAL-SIDED RIGID ENTRY FITTINGS


- Provide double containment protection
- Prevent groundwater intrusion
- Eliminate contamination between sump and access pipe
- Designed for long-term exposure inside sump

Variety of Options
Available

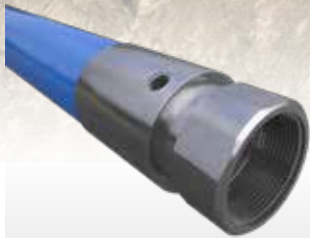
Available in
4" and NEW 6"

Available in .75", 1",
1.5", 2" and NEW 3"

Available in 1.5",
2" and NEW 3"



The Loop System contains fewer parts to stock and install



DOUBLE-WALL PIPE COUPLINGS (DPC)

- Eliminate need for rubber test boot
- No trimming back secondary jackets
- Allow for continuous monitoring
- Stainless-steel construction compatible with all fuel brands

Available in 1.5", 2" and NEW 3"



10 PLUS EMERGENCY VALVES

- Protect against low-impact fractures in the shear groove
- Eliminate contamination and fire hazards created by leaks from fractured valves

Available in 1.5" and NEW 2"



PRE-FABRICATED QUICK-COUPLE DISPENSER SUMPS

- Easy to spec
- Quick access for maintenance
- Fast and simple installation
- Pre-assembled at factory

Variety of Options Available



NEW

HIGH-FLOW DISPENSER SUMPS

- Handle high-flow applications, such as retail truck stops.
- Accommodate fuel dispensing on both sides of truck
- New sizes to handle more demanding throughput

Variety of Options Available



PLANNING



Mark Cartmell

*Distributor,
Jones & Frank*

"I can spec out the materials list for the site very easily. The numbers of fittings and parts are quite small and help me from a time-saving standpoint."



BUILDING



John Gordon

*VP of Construction &
Environmental,
Englefield Oil Company*

"I've found it only takes one day for installation, helping me to line up inspections early, saving us time and money."

- Pre-fabricated components are easy to plot out
- The ordering process is simple, and distributors will have more success getting contracting crews what they need
- Both distributors and contractors save valuable time
- A limited number of connection points makes system design more straightforward

- Tanks in the Loop System can be buried at a shallower depth, lowering costs and time spent on excavation and backfilling
- Fewer workers are needed to make connections, and there is no need for stripping pipe jackets
- Time and costs get cut in half compared to the installation of traditional underground systems
- Pre-fabrication allows for plug-and-play installation



The Best - and Most Complete - Package in Underground Dispensing



SERVICE & REPAIR



Steve Carson
Contractor,
Layton Excavating

"It's easy to pull out pipe and replace it with new product in the same area without breaking concrete or removing the dispenser. We recommend the Loop System to all of our customers."

- Couplers come with built-in test ports to provide easy monitoring
- Access to all connections is brought to the surface, so concrete remains untouched during maintenance
- Pipe can be removed, checked and replaced simply through the sump opening
- Double containment prevents environmental issues like groundwater contamination from bringing fueling operations to a halt

From concept to completion, OPW provides a total solution that makes life easier for all parties.

Starting by simplifying the spec process, OPW saves plenty of headaches throughout the construction of its Loop System.

The plug-and-play nature of the system makes builds faster and more efficient, while providing an ease of service that is unparalleled. Distributors, contractors and fueling stations get to enjoy the innovative design of the Loop System and its benefits.

DEFINING WHAT'S NEXT



Loop
SYSTEM

OPW's extensive catalog of underground storage tank, fuel-transfer and containment and tank-gauge equipment allows fueling stations to confidently outfit an entire site using one source. The industry's best components, designed to work in unison and deliver the highest standard of quality, reliability and performance. Ensure the best fueling site, backed by the best name in the business. **OPW.**

Contact your OPW District Manager today to learn more or visit opwglobal.com.